

THE LOT NUMBER IS FOUND IN THE UPPER RIGHT HAND CORNER OF LOTS AS YOU FACE THE SECTION AND IS INDICATED THUS

LOCATION OF GRAVE MARKERS SHOWN THUS
 ARROW INDICATES DIRECTION GRAVE MARKERS WILL FACE.

ALL LOTS ARE 2 GRAVE LOTS EXCEPT WHERE OTHERWISE NOTED.

ALL 2 GRAVE LOTS ARE 6'x9'
 ALL 3 GRAVE LOTS ARE 9'x9'

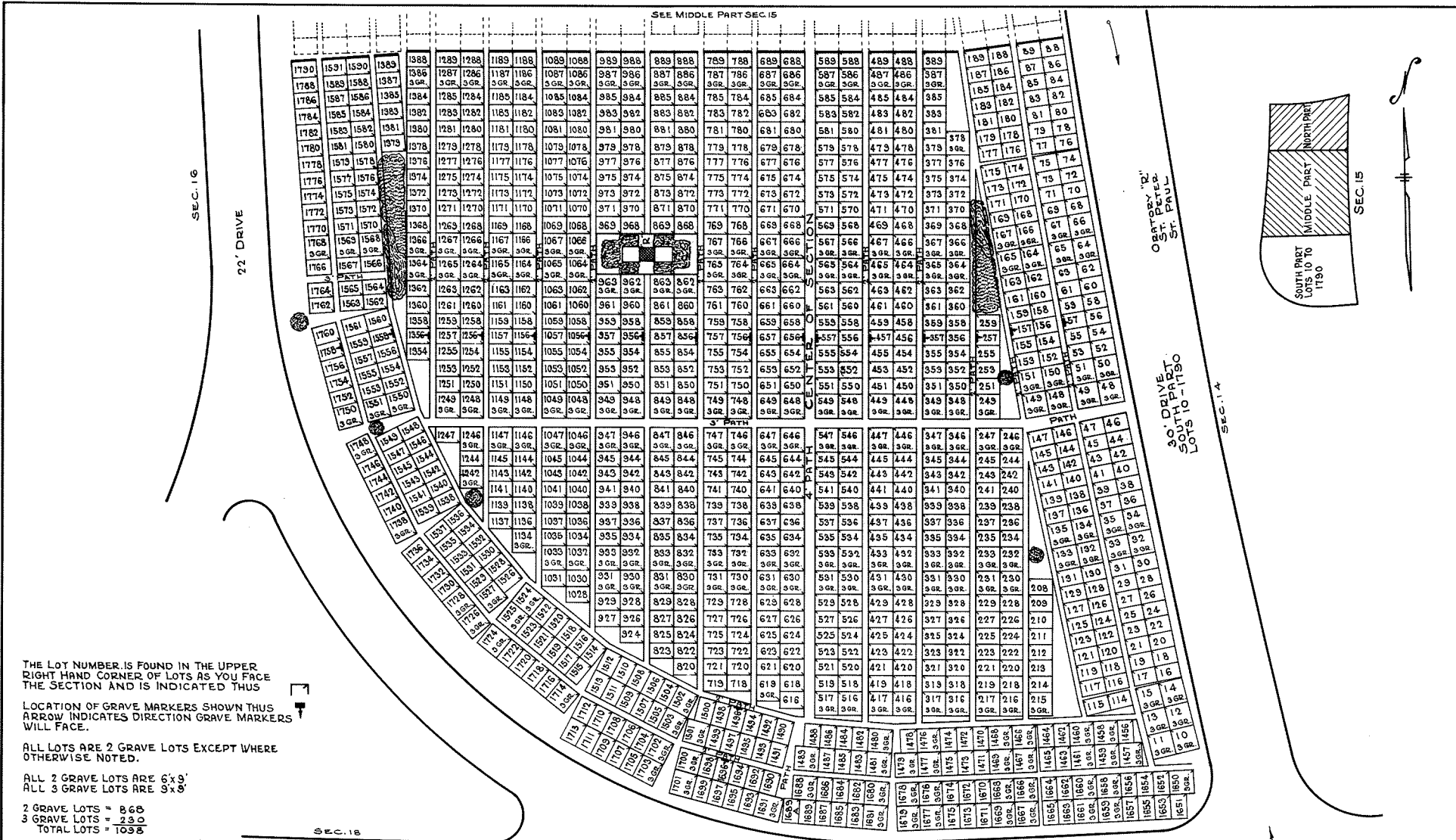
2 GRAVE LOTS = 4.75
 3 GRAVE LOTS = 9.4
 TOTAL LOTS = 525

HOLY CROSS CEMETERY
 CLEVELAND, OHIO
 NORTH PART

SECTION 15.

SCALE 1"=20' G.C.A. JULY, 1956

REV. (A) 1-10-55
 REV. (B) 5-18-55
 REV. (C) 4-10-55



THE LOT NUMBER IS FOUND IN THE UPPER RIGHT HAND CORNER OF LOTS AS YOU FACE THE SECTION AND IS INDICATED THIS

LOCATION OF GRAVE MARKERS SHOWN THIS ARROW INDICATES DIRECTION GRAVE MARKERS WILL FACE.

ALL LOTS ARE 2 GRAVE LOTS EXCEPT WHERE OTHERWISE NOTED.

ALL 2 GRAVE LOTS ARE 6'x3'
ALL 3 GRAVE LOTS ARE 3'x3'

2 GRAVE LOTS = 860
3 GRAVE LOTS = 230
TOTAL LOTS = 1090

HOLY CROSS CEMETERY
CLEVELAND, OHIO
SOUTH PART
SECTION 15
SCALE 1"=20' G.C.A. JULY, 1956

REV. 1-10-52
REV. 2-18-52
REV. 4-10-52
REV. 12-3-51

30' DRIVE